



Colchester[®]
GLOBAL INVESTORS

Corporate Social Responsibility

June 2025



A Message from Keith Lloyd, Group Chief Executive Officer of Colchester Global Investors



Keith Lloyd

Group Chief Executive Officer,
Colchester Global Investors

In recent times, global markets have been characterised by heightened volatility, geopolitical tension, and economic uncertainty. In this environment, Colchester's singular focus on sovereign bond and currency management serves as a steady anchor for our clients. Our long-term investment horizon, the stability and experience of our team, and our disciplined, research-driven approach enable us to navigate complexity with clarity and composure – qualities that we believe are essential in helping our clients remain focused on their long-term goals. What sets Colchester apart is not only our investment philosophy, but the people who embody it. Across eight global offices, our team of 91 professionals represents 20 nationalities and speaks 25 languages¹. Notably, approximately one in four of our employees have been with the firm for over a decade, reflecting a culture of loyalty, continuity, and shared commitment. Each team member contributes a distinct perspective, yet all are united by a common purpose. This diversity is not only a source of strength, but a reflection of the global nature of our work and the inclusive values we uphold.

We take our role as guardians of our clients' investments seriously and are guided by strong moral and ethical values which are embedded in the firm's DNA. We view our clients as long-term partners, and we believe trust is built through openness, consistency, and accountability – principles that are deeply embedded in our culture and guide every decision we make on behalf of our clients. In periods of uncertainty, we remain grounded by a certainty of purpose. It is this unwavering clarity, combined with intellectual rigour and a steadfast commitment to excellence—that we believe provides the strongest foundation for enduring success, both for our clients and for our people.

¹ As of 1st April 2025



Table of Contents

Colchester – Our Values	4
Colchester's Dimensions of Corporate Social Responsibility	5
Our People	6
Equality, Diversity & Inclusion ("ED&I")	7
Employee Engagement	11
Learning & Development	12
Society	12
ESG Integration - Our Investment Process	13
ESG-Integrated Investment Process	13
Sovereign ESG Scoring Framework	14
Sovereign Engagement	15
Industry Initiatives and Collaborations	16
Engagement & Collaboration	17
Client Service	18
Stewardship & Corporate Governance	19
Operational Resilience & Sustainability	21

Colchester – Our Values

Our values underlie Colchester as a business and are embedded in the firm for the future to guard against complacency or mediocrity. Colchester operates with clarity of thought, vision and roles.



Focus

Investment professionals require a focused and stable environment in order to be consistently effective in their work. Colchester views employee ownership and control as one of the best ways of avoiding the uncertainties that can threaten focus and stability. Many Colchester employees own shares in the business and we believe that our ownership structure aligns employees' interests with those of our clients.



Integrity & Trust

Colchester works for our clients (and their beneficiaries) and clients' interests take precedence over any other interests at Colchester. We treat our clients fairly.



Perspective

Colchester, in both its investments and its business outlook does not permit short-term expediency to outweigh medium-term benefits.



Service

We aim to provide accurate reporting, timely information and efficient administration.



Humility

Colchester strives to build and nurture an environment where employees are encouraged to behave with humility and respect for others.



Teamwork & Devolved Leadership

Creating and maintaining an environment where everyone can contribute to the success of the company is part of Colchester's ethos. Different skills and perspectives are valued, and we recognise that employees work better as a diverse team who all support each other.



Innovation & Constant Improvement

Colchester focuses on its core expertise whilst doing everything it can to be the most capable, knowledgeable and leading company in its field.

Colchester's Dimensions of Corporate Social Responsibility

Diversity & Inclusion

Colchester is committed to creating a safe and inclusive environment that embraces differences. A place where employees feel confident to bring their whole selves to work.

Employee Engagement

We believe that people do their best when they feel their best. Enabling everyone to work at their best contributes to our overall success. We continue to focus on creating a workplace that supports mental, physical and financial wellbeing.

Society

Colchester supports community engagement including providing employees with paid time off to support their volunteering efforts.

ESG-Integrated Investment Process

Colchester's investment process includes the systematic integration of ESG factors.

Signatory, Affiliation & Collaboration

Colchester is signatory to the UNPRI, supporter of TCFD and active collaborator with the CFA and EMIA.

Sovereign Engagement

Colchester applies a holistic engagement process as an integral part of its investment valuation framework and believes effective sovereign engagement to be mutually beneficial.

Client Service & Engagement

Colchester has a proven long-standing culture of aligning client and shareholder interests which is at the centre of our core values. We aim for our journey together to be a partnership.

Stewardship & Corporate Governance

Colchester's robust corporate governance practices are testament to its high operating standards as a business entity. We are highly rated by leading consultants across the globe.

Operational Resilience & Sustainability

Colchester commits significant resources to ensure the right measure of controls and oversight for optimal operational resilience and sustainability.

Our People

Colchester is built on our core values which form the foundations of our culture and underpin everything we do. Being an inclusive employer with a diverse workforce is a fundamental part of how we operate as an organisation. The diverse characteristics and perspectives that our people bring to Colchester give us a vital competitive edge and our policies are designed to promote our values and protect our employees. We believe that every one of our employees, clients and stakeholders bring something different to the table and those differences are something to be valued. Our [Equal Opportunities and Diversity Policy](#) demonstrates our commitment to ensuring there is no discrimination in our company, which extends from the recruitment process, right through the employee lifecycle.



Chinese New Year Celebrations in Singapore

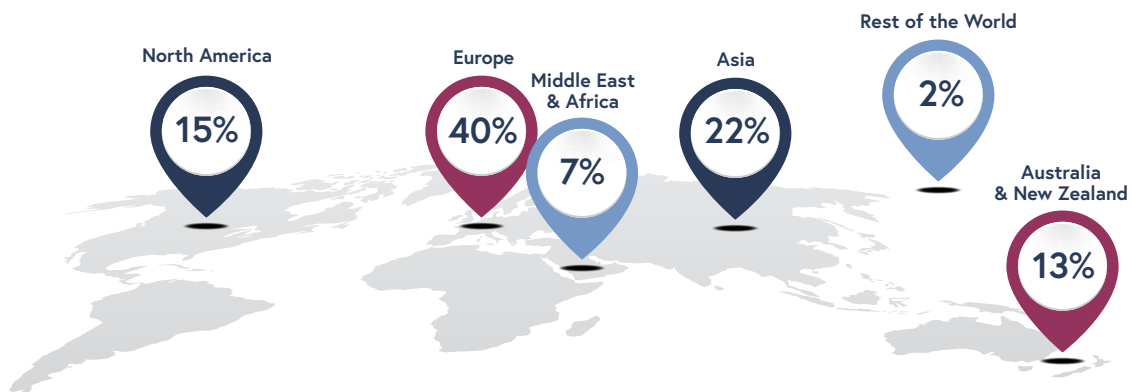
Total number of employees **91**

Total number of nationalities **20**

Languages spoken **25**

We actively promote integrity, trust and humility, all of which form part of our core values. We understand that being good at what we do takes collaboration, teamwork and respect for each other and we work hard to build this into our inclusion efforts. Fostering this inclusive culture is crucial to our employees and clients who are at the heart of everything we do.

Geographic Distribution of Employees¹



Diversity & Inclusion

At Colchester, we are committed to championing opportunity and cultivating an inclusive culture where everyone can thrive. We believe diversity of people, backgrounds and perspectives is critical to our continued success and ultimately, our aim is for the diversity of our employees to reflect that of the communities we are part of.



London employees celebrating Christmas Jumper Day in aid of the charity Save The Children





Leadership and Governance

Fostering a culture of ED&I is fundamental to Colchester and remains a critical priority for us which is supported by our board, CEO and management committee. Our Global Head of Human Resources is responsible for driving ED&I initiatives across the organisation and ensure consistent execution of the ED&I strategy. Our Human Resources team report to the Board on progress against initiatives.



Talent Acquisition

Creating a highly diverse workforce, with a wide range of skills, talent and perspectives starts by attracting the best people, we aim to do this by actively seeking out and nurturing talent from a variety of different backgrounds. We don't use artificial intelligence (AI) tools in our recruitment decision making. Our recruitment practices include gender neutral terminology, do not screen by academic qualification unless clearly necessary to perform in the role and broadening our use of diverse job boards for advertising our job opportunities. We continue to place additional emphasis on our early careers programmes, including a dedicated summer internship programme to provide work opportunity to students from various different backgrounds. We partner with organisations such as #10,000 Black Interns to encourage those from more diverse backgrounds to join.



Education

We deliver programmes and create policies that embed ED&I in our operating and governance models. Our aim is to strengthen our culture whether employees are working in the office or virtually. We believe all employees share responsibility in building a culture where everyone feels they belong. To that end all employees complete annual online discrimination and harassment, diversity and inclusion and unconscious bias training to provide the language, tools and resources to enable them to recognise unconscious bias, appreciate and value cultural differences and create allyship.



Metrics

We strongly believe in data as a tool to better understanding our people. Where possible, we collect data on categories including age, ethnicity, faith, gender, sexual orientation and socio-economic background for our global workforce. We use this data to build a comprehensive picture of our organisation where progress has been made and where we have more to do.

Our employees span a diverse range of ethnicities, genders, cultural and socio-economic backgrounds. We pride ourselves on having a culture where differences are not only respected but welcomed. It is only by recognising these differences that we can attract the best people, develop and use their talents, and create a great place to work.



Awareness & Outreach

In February 2024 Colchester signed up to be a member of the Diversity Project, a cross-company initiative championing a more inclusive culture within the investment and savings profession. This was a big step forward in accelerating our diversity and inclusion efforts, providing us with the opportunity to collaborate with our peers across the industry, benchmark our diversity initiatives against industry best practice and together play our part in creating a more diverse sector.



Employee Facts & Figures

Employee Snapshot (as of 1 April 2025)

- The statistics reflected in this report include our permanent and fixed term employees only
- Senior Management Team includes Directors and Global Heads of Department who attend Management Committee meetings



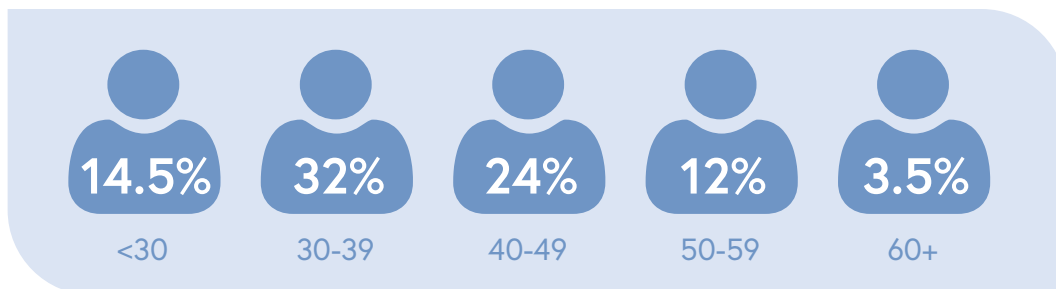
London employees volunteering with the Felix Project

- 42%** of our Employees globally identify as female
- 50%** of our Board identify as female
- 42%** of our Senior Management Team identify as female
- 25%** of our Investment Officers identify as female
- 34%** of our Employees identify as ethnically diverse
- 36%** of our Employees were the first generation in their immediate family to attend University
- 57%** of our Employees attended State-run or State-funded schools
- 46%** of our Employees speak 2 or more languages



London employees volunteering with the Felix Project

Age bracket

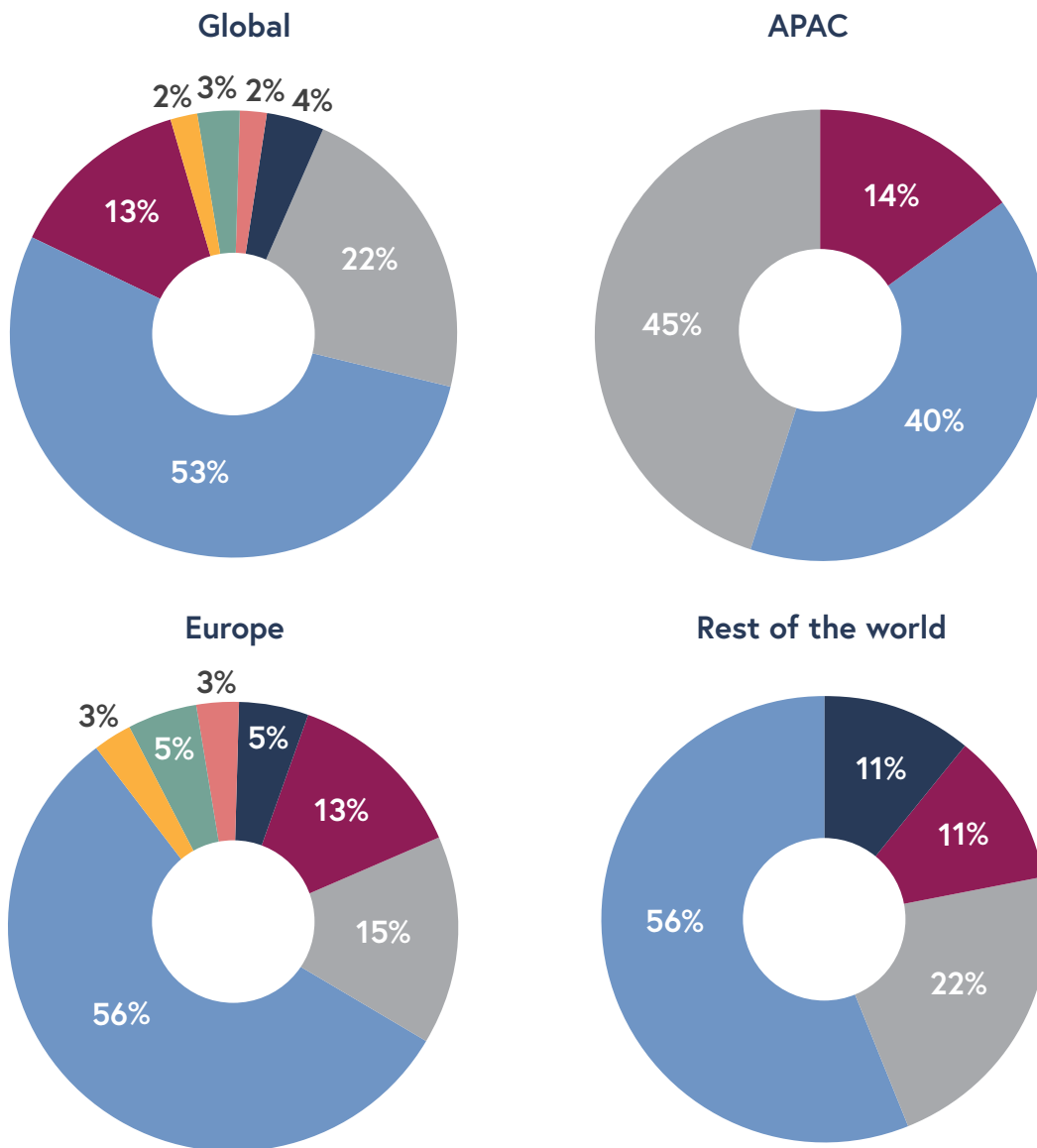


14% prefer not to say/opt out

Ethnicity (Minority Representation)

We realise that improving ethnic representation requires additional focus. Our aim is for the diversity of our employees to reflect that of the communities we are part of, at all levels of the organisation.

The charts below show representation of the Colchester workforce in each region by ethnicity²



- White
- Asian
- Black
- Hispanic / Latino
- Other
- Mixed / Multiple Ethnic Race
- Not completed/ Prefer not to say

² For the purposes of this report our ethnic minority population includes employees who identify as: Asian, Black, Hispanic or Latino, mixed ethnic background and other ethnic background however, we acknowledge that the way each person describes their identity is personal and encourage everyone to use the terms that they feel more effectively captures their own identities and cultures.

Employee Engagement

The widespread employee ownership of Colchester clearly aligns the interest of employees with the long-term interests of the firm, and ultimately those of our clients. As "owners", our employees are directly rewarded by the overall profitability of Colchester through their dividend stream. This ownership coupled with our independence provides a strong incentive for all employees as shareholders in the going concern, profitability and stability of the firm.

We seek to attract and retain employees by providing a rewarding employee experience that encourages staff to act in the best interests of our clients. From their first day at Colchester, we work to welcome employees into a culture that is respectful, humble, collaborative and fosters a sense of belonging.

Employees are Colchester's most valuable resource, and we believe that people do their best when they feel their best. We are committed to providing our employees with a comprehensive, competitive and inclusive benefits package that caters to the needs of our diverse workforce. We offer robust and comprehensive benefits programmes globally which include top quality health insurance coverage for employees and their families. In addition to our comprehensive benefits, our wellness programme includes access to our Global Employee Assistance Plan (EAP) which provides confidential access to external specialists for employees who need someone to talk to about life, family or financial issues.

Over the last 12 months we have built on our inclusive global benefits including:



Paid leave for parents following a pregnancy loss.



Paid leave for employees who are victims of domestic abuse.



Healthy snack options in most of our global offices.



Martyn Simpson, Senior Investment Officer presenting at the Australia Advisors Big Day Out



I joined Colchester in 2023 as an Operations Graduate. The welcoming atmosphere helped me settle in quickly and everyone was happy to answer any questions I had. The drive for innovation and improvement is evident in every department and individual, with all ideas being considered. I have had numerous opportunities to broaden my skill set through working with different departments and being supported through sitting professional qualifications.

Sarah Osgood, Operations Analyst, London

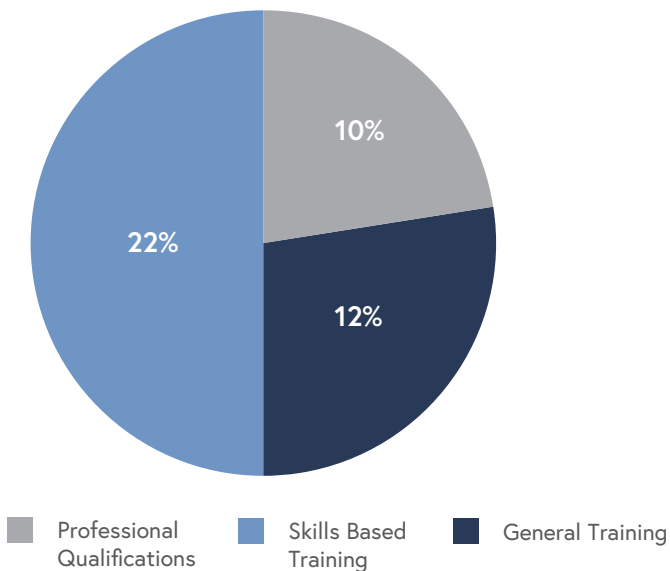
Learning and Development

In today's competitive market, organisations that thrive are those that engage the best people, invest in their development and enable them to adapt to change. At Colchester, we strive to build a high-performance culture and understand that offering robust and varied experiences for learning and development is key to attracting and retaining the best talent.

To support professional development and career advancement, we offer all employees development opportunities both internally, through on-the-job training, coaching feedback and mentoring and externally, through study leave and financial assistance for private study towards professional qualifications and ongoing professional memberships. We actively champion internal progression and global mobility and strive to create a lifelong learning culture that provides all our employees with the opportunity to maximise their potential.

Professional Development

Of the 44% of Staff Undertaking Professional Development:



Over the last 12 months to April 2025:

13% of Employees received an internal promotion and/or global mobility opportunity.

44% Colchester supported 44% of our employees with some form of personal professional development. Examples include:

- CFA
- ACCA
- Client Presentation Skills
- Voice Coaching

Society

Acting as a responsible corporate citizen is a key priority for Colchester and we encourage charitable work in all our locations to support our employees in playing a positive role in their communities. All employees are entitled to, and recommended to take, one day per calendar year to volunteer at various local community projects that are important to them. Volunteerism is a powerful way for our employees to connect with each other and give back to organisations that are meaningful to them.



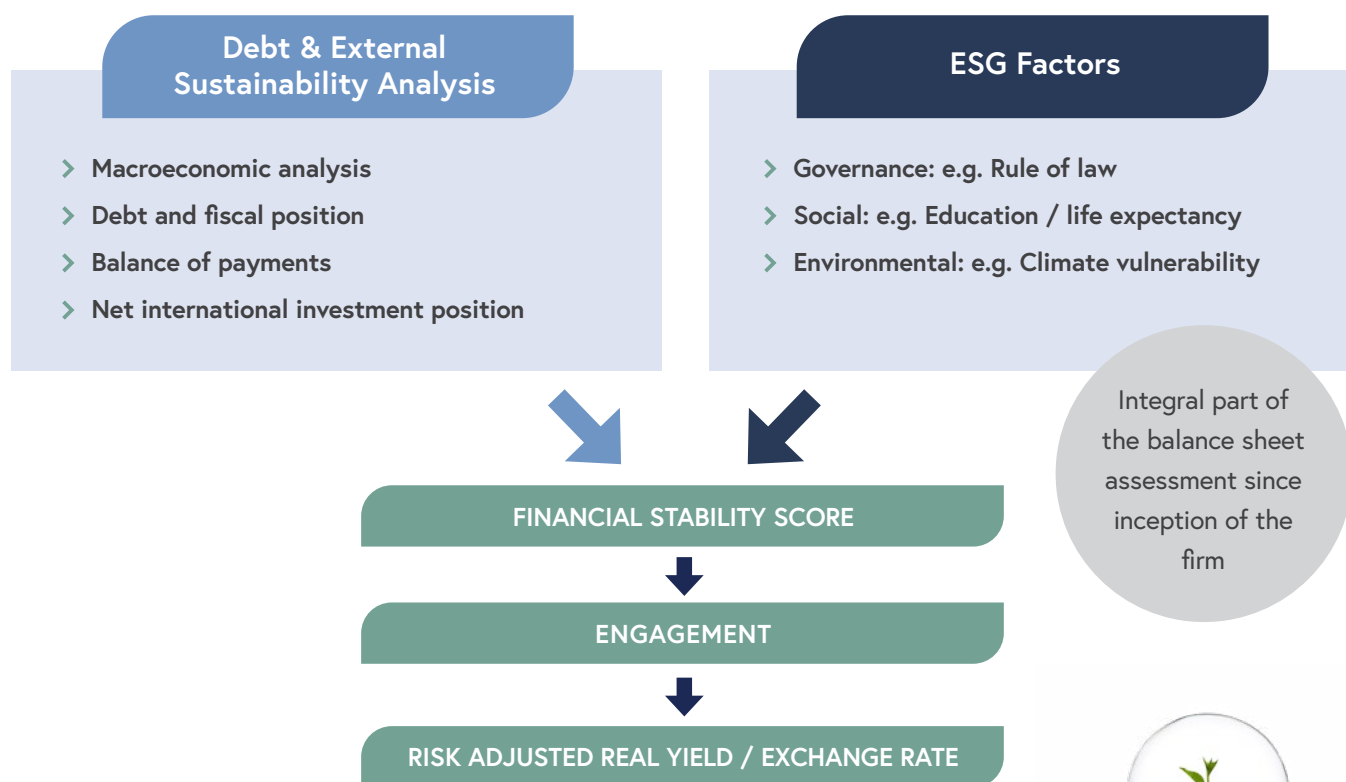
Celebrating International Women's Day in Singapore.

ESG Integration - Our Investment Process

ESG-Integrated Investment Process

ESG factors are integrated holistically into our valuation framework. Countries are assigned a proprietary Financial Stability Score (FSS) that combines an assessment of their overall balance sheet strength and ESG factors (Figure 1). Bond and currency scores range from +4 to -8 (depending on strategy) and are determined through an extensive assessment of the macro-economic environment, policy framework, ESG standards and other country specific factors. The data used in the financial health assessment comes from government statistical offices, central banks and international institutions such as the OECD, IMF and BIS. Similarly, ESG data comes from standardised internationally recognised organisations such as the United Nations and the World Bank, as well as relevant databases and other independent sources such as the Notre Dame Global Adaptation Initiative and the YALE Environmental Performance Index. The ESG data is standardised into a proprietary ranking or ESG score for each country, which in turn is incorporated into the overall FSS along with the assessment of balance sheet strength and qualitative analysis.

Figure 1: Financial Stability Score a function of Balance Sheet and ESG Factors



Responsible investing is an integral part of the investment process. However, Colchester never makes investment decisions based solely upon ESG factors. Unless specified in the client Investment Management Agreement or offering documents, specific assets with poor ESG ratings may not be excluded from portfolios. For more detail on ESG factors please see our [ESG Policy](#).



Sovereign ESG Scoring Framework

Whilst there are strong interlinkages between ESG factors and traditional balance sheet or "credit" metrics, Colchester has developed a sovereign ESG Scoring Framework to measure and compare countries' exposures specifically to ESG risks, in a systematic and consistent fashion. A series of publicly available metrics are used to assess ESG risks under a variety of categories. For example, environmental metrics consider a country's vulnerability to climate through two lenses, namely physical risk and transition risk. Physical risk relates to a country's sensitivity to the implications of climate change such as extreme weather events, whilst transition risk is concerned with the implications of adjusting to a low-carbon economy. Social characteristics of a country are assessed via Human Capital (the knowledge, skills and experience of the population) and Social Cohesion (the levels of trust, accountability and equality prevailing in society). Governance standards such as the rule of law, property rights and financial freedom are also measured.

The indicators and risk factors considered are set out below in Figure 2. These indicators are combined and distilled into a composite ESG score for each country on a normalised scale of 1-100.

Figure 2: Sovereign ESG Indicators

	Pillar	Risk Factor	Indicator	Source
Environmental	Transition Risk	Decarbonisation	Renewable Energy Coal/Oil rents CO ₂ emissions per capita Total CO ₂ emissions Scenario Analysis*	Bloomberg NEF World Bank EDGAR EDGAR
	Physical Risk	Environmental Damage Vulnerability to Climate Change	Air Quality Sanitation & Drinking Water Biodiversity Vulnerability Index Scenario Analysis*	Colchester Global Investors YALE Environmental Performance Index YALE Environmental Performance Index YALE Environmental Performance Index Notre Dame Global Adaptation Initiative Colchester Global Investors
Social	Social Cohesion	Political Stability/ Representation Equality Health & Education	Voice and Accountability Political Stability & Absence of Violence Gini coefficient Life Expectancy at Birth Education (Expected/Mean years of schooling)	Worldwide Governance Indicators Worldwide Governance Indicators World Bank World Bank UN Human Development Report
	Human Capital	Demographics Labour Market	Old Age Dependency Ratio Prevalence of Modern Slavery Female Labour Force Participation Youth Unemployment	World Bank Global Slavery Index World Bank World Bank
Governance	Government Effectiveness	Government Effectiveness	Government Effectiveness Regulatory Quality	Worldwide Governance Indicators Worldwide Governance Indicators
	Rule of Law	Corruption/Property Rights	Freedom from Corruption Property Rights World Press Freedom	The Heritage Foundation The Heritage Foundation Reporters Without Borders
	Economic Environment	Economic Freedom	Trade Freedom Investment Freedom Financial Freedom	The Heritage Foundation The Heritage Foundation The Heritage Foundation

*For more information on the Modelling of Physical and Transition Risks undertaken by Colchester, please refer to our latest Sustainability Report on the Climate Change & Sustainability tab of our website.

Sovereign Engagement

At Colchester, we believe that traditional sovereign credit analyses should be supplemented with the systematic integration of ESG factors for all developed, emerging and frontier markets. Our holistic engagement process forms an integral part of our investment valuation framework and is mutually beneficial for both issuers and investors. In practice, Colchester has engaged with multiple country stakeholders since the inception of the firm. The following chart shows the various types of stakeholders we seek to engage with as part of our research process. We believe that our objective, unbiased opinions and sharing of global experiences with government and other entities throughout the years, has been positively received.

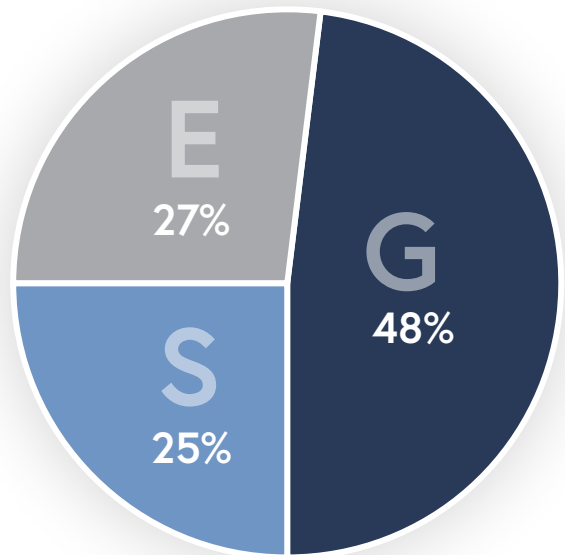
We publish our semi-annual engagement reports on our website [here](#).

During our [latest engagement report](#) we recorded 45 engagement meetings and addressed 75 issues.

45 Engagements and 75 Issues

Summary of Engagement Issues: H2 2024

- 73%** of engagements were Government Officials
- 20%** of engagements were with Industry-level collaborations
- 7%** of engagements were with non-Issuer Stakeholders



“The ASCOR project aims to fill a data gap on sovereign climate change, intending to provide investors with decision-useful information, whilst allowing sovereign issuers to showcase their progress. It’s been a pleasure to work collaboratively with many stakeholders globally in developing this timely and required common approach.”



Claudia Gollmeier

Managing Director, Singapore and Head of Investment Management, Asia Pacific, Middle East and Africa (APAC & MEA).
Co-Chair of ASCOR

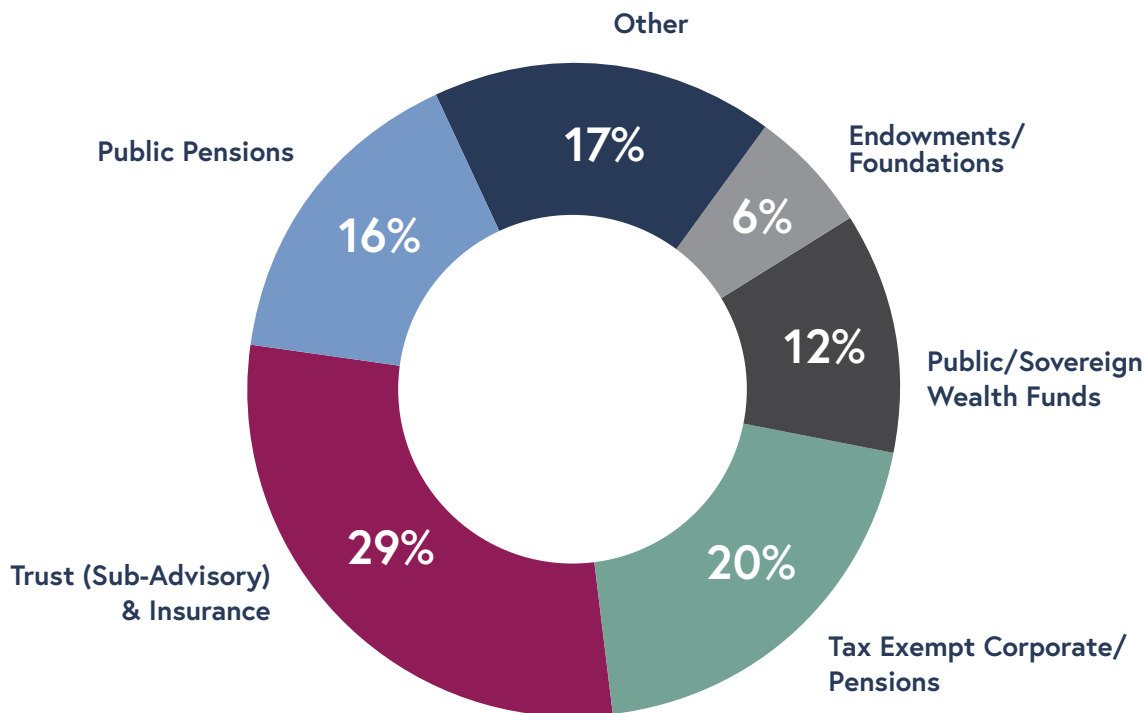
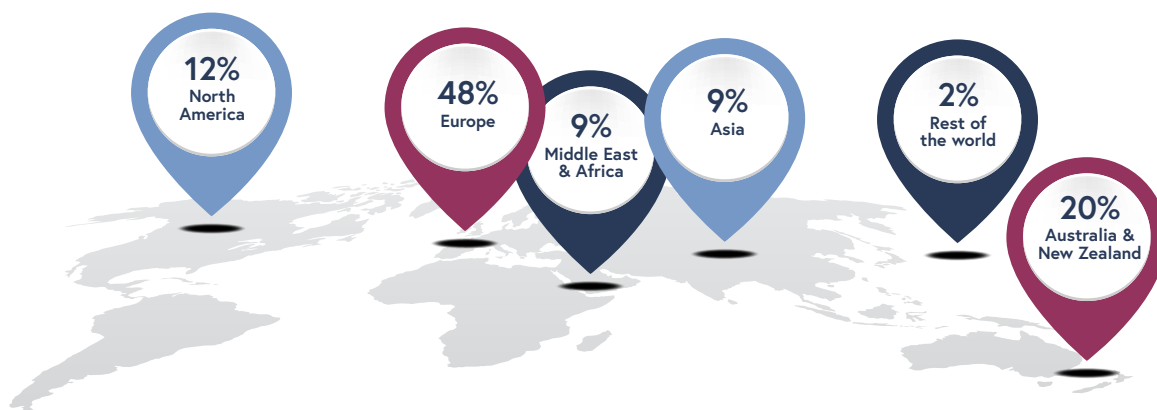
Industry Initiatives and Collaborations

Industry Initiatives/ Collaborations	Acronym	Description
<u>Principles for Responsible Investment</u>	PRI	Colchester is a signatory to the PRI, a UN-supported network of investors that works to promote sustainable investment through the incorporation of environmental, social and governance considerations.
<u>Task Force on Climate-related Financial Disclosures</u>	TCFD	Colchester has been a supporter of TCFD since May 2019 and we keep reporting annually on our progress.
<u>Transition Pathway Initiative</u>	TPI	Colchester is a supporter of TPI – a global, asset-owner led initiative which assesses companies' preparedness for the transition to a low carbon economy. However, as a sovereign only asset manager, we are a research funding partner to develop a sovereign climate assessment framework via the ASCOR project.
<u>Emerging Market Investors Alliance</u>	EMIA	Colchester is a member of the Alliance, a not-for-profit organisation that enables institutional emerging market investors to support good governance, promote sustainable development, and improve investment performance in the governments and companies in which they invest. We are a member of the steering committee of the carbon transition initiative.
<u>Green Bond Transparency Platform</u>	GBTP	Colchester is a supporter to the GBTP led by the Inter-American Development Bank (IDB) and IDB Invest. IDB Invest is an innovative digital tool that brings greater transparency to the green bond market in Latin America and the Caribbean. GBTP supports the harmonisation and standardisation of green bond reporting, boosting investors' confidence that the proceeds from bond issuances are being spent on green projects whose impact are adequately measured.
<u>Assessing Sovereign Climate-Related Opportunities and Risks Project</u>	ASCOR	The project goal is to develop an assessment framework that enables the current and future climate change governance and performance of sovereigns to be fairly and appropriately measured, monitored and compared.
<u>Investors Policy Dialogue on Deforestation</u>	IPDD	The objective of the IPDD initiative is to ensure long-term financial sustainability of investments in the countries they are invested in by promoting sustainable land use and forest management and respect for human rights. The IPDD will engage with relevant government authorities, and industry associations and other relevant stakeholders to encourage adoption and implementation of regulatory frameworks that ensure protection of tropical forests and human rights.
<u>Investment Management Association Singapore</u>	IMAS	Colchester is a co-chair of the IMAS ESG Working Group, which jointly support industry ESG capacity building.
<u>Nasdaq Sustainable Bond Network Advisory Board</u>	NASDAQ	Colchester is a member for the Nasdaq Sustainable Bond Network. It connects issuers of sustainable bonds with investors, empowering them to evaluate impact and make informed investment decisions on sustainable bonds.
<u>PRI Collaborative Sovereign Engagement on Climate Change Australia</u>	PRI	The Collaborative Sovereign Engagement on Climate Change is a pilot PRI-led investor initiative to support governments to act on climate change. The Australian initiative consists of three sub-groups focusing on different parts of sovereign systems: a) National governments b) National regulators and authorities and c) Sub-sovereigns.

As of December 2024

Engagement & Collaboration

At Colchester, we manage and service a well-diversified global client base who invest with us via separate accounts or commingled funds. We take particular pride in managing assets for a diverse array of clients, from indirectly helping individuals with saving for their pensions in order to have a secure and rewarding retirement, all the way through to sovereign wealth funds seeking to build a better future for their populations. Our focus is on adapting to our customers' ever-changing needs with the aim of helping them to achieve their long-term financial goals.



AUM US\$27,139 million as of 30 April 2025

Client Service

At the core of Colchester's approach lies our commitment to clients which is embodied in our Client Charter and guides our every interaction. We are committed to fostering long-term relationships with our clients that are built on trust and our unwavering dedication to their success. Our mission is clear, to deliver not just superior investment performance, but to help our clients grow through the sharing of knowledge and insights. We dedicate ourselves to understanding our clients' unique goals, ensuring they receive the attention and care that they deserve.

It is Colchester's mission and promise to partner with clients to provide a service that is not only helpful, timely and meaningful, but also enriches the investor experience.

We place great value on feedback from our clients, actively seeking their thoughts on a broad spectrum of topics. Our annual Client Service Survey is designed to capture feedback on our level of service so that we can learn where we have room to improve. Whilst our goal is to always meet and exceed our clients' needs, we acknowledge that sometimes we may fall short and that we could do things better. Should we ever miss the mark, our complaints policy guarantees thorough investigation and resolution, ensuring any issues are addressed and measures are put in place to prevent future occurrence.



An interview about Colchester's EMLC capabilities with Susana Criado from Intereconomia Ratio in Madrid and Analia Giachino, Head of Distribution, Israel, Iberia & Latin America



Jean Lee, Investment Officer and Martyn Simpson, Senior Investment Officer collecting the Gold Award from Fund Selector Asia in July 2024



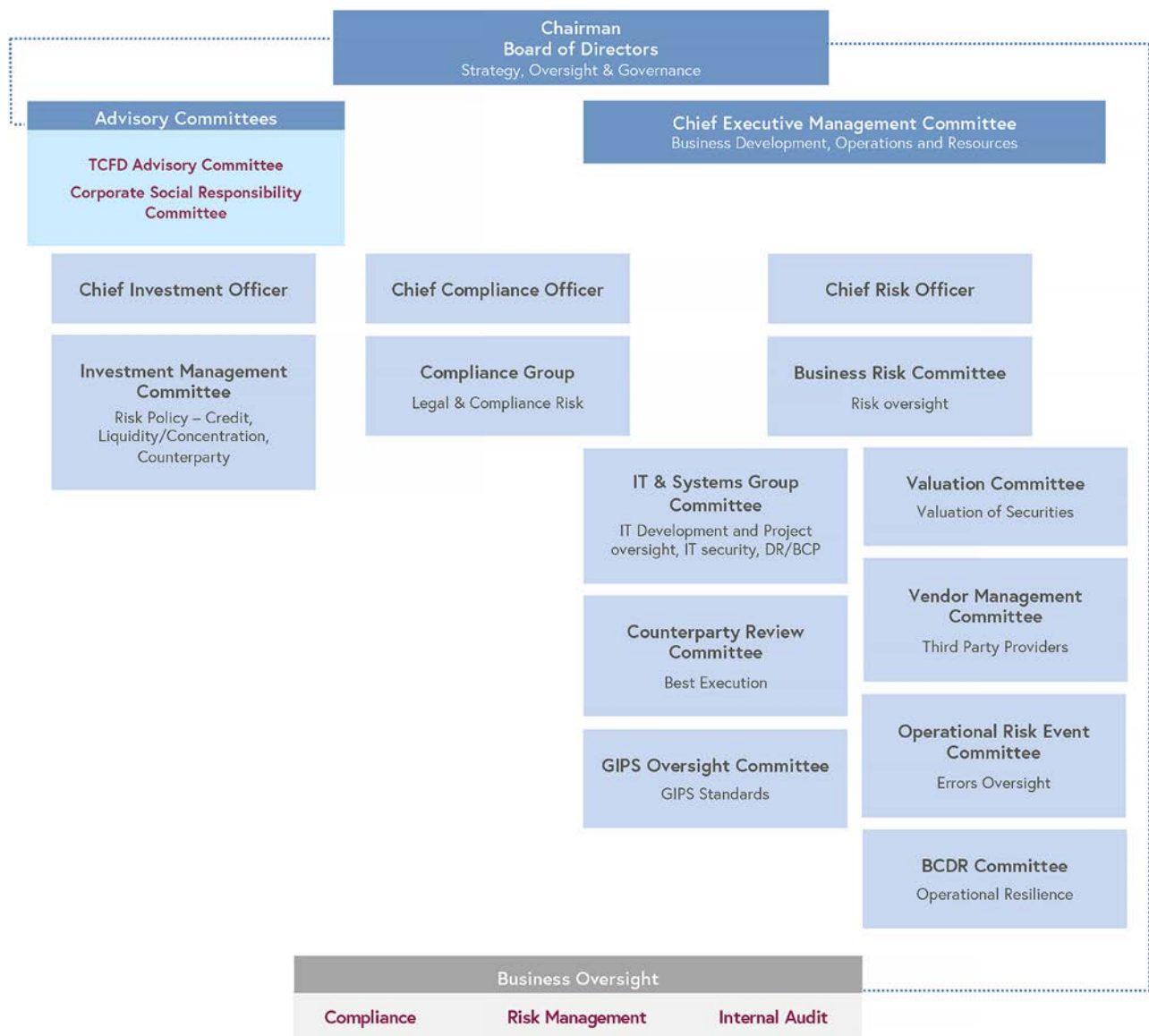
Joining Colchester as an Investment Operations Officer back in 2018 provided me with an amazing platform to broaden my experience and to improve in both professional and individual capacities. I am very thankful that Colchester recognises my capabilities with my promotion to Operations Manager. It is motivating to be in a firm where inter-departments work with a common objective, in the best interests of our Clients. I am very proud to be part of Colchester's diverse and dynamic family.

Shendia Ng, Operations Manager, Singapore

Stewardship & Corporate Governance

Colchester's governance and risk management structure balances strong central oversight with clear accountability for, and ownership of, risk, policies and practices within each operational area. Corporate responsibility and risk are managed through a series of committees that report to the Board. This structure supports the continuous flow of information between the operational areas, corporate oversight functions (Risk Management, Internal Audit and Compliance), the Chief Executive Management Committee and the Board of Directors. Firm-wide accountability ensures our robust policies are consistently communicated and implemented, promoting excellence, high ethical values and integrity across our activities at all levels.

Governance and Risk Management Structure



This is validated through structured regulatory updates circulated to all staff and an effective monitoring programme identifying potential risks, proactively working in partnership to formalise resolutions, ensuring these are executed and that the outcome addresses the core problem. Colchester outsources both the Internal Audit programme and the System and Organisational Controls review to independent third-party auditors to demonstrate compliance with our business practices and ethical behaviour. We believe this transparency promotes trust across the firm and externally to our clients.

Whilst "compliance" with the laws and regulations is the minimum standard to which we hold ourselves and those who work with us, in ensuring ethical behaviour from employees we endeavour to follow not just the letter of the law, but the spirit that underpins and informs it. All employees are expected to uphold Colchester's high standards of conduct, which are consistent with conduct and fitness & proprietary rules prescribed by our various regulators.

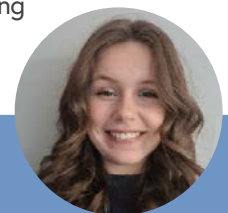
Colchester's Code of Ethics sets out the minimum performance and conduct standards for employees. Its purpose is to promote honest and ethical conduct, to identify, eliminate or manage actual or potential conflicts of interest and to ensure compliance not only with all legal and regulatory requirements, but with current best practices in the investment management industry, whilst acting in the best interests of our clients at all times. These conduct standards are formally reinforced at least annually through our compliance employee training programme (supplemented by employee attestations). In addition to the Code of Ethics, employees are required to comply with Colchester's compliance policies which include privacy and confidentiality, conflicts of interest, personal account dealing, gifts and hospitality, sponsorships, political contributions, outside business activities, insider information, market abuse, money laundering, counter terrorism, counter proliferation financing, fraud, sanctions, bribery and corruption. Colchester has zero tolerance for illegal or unethical conduct, and any employee who violates the requirements of Colchester's Code of Ethics, or any of our other compliance policies may be subject to disciplinary action.

Colchester seeks talented, principled people and ensures diversity of skills, knowledge and experience within our Board of Directors. New Board members are selected based on competence and ability when analysed against the requirements of the vacant position. Additionally, we recognise the importance of demographic diversity on our Board and are committed to promoting a policy of diversity in our management body. To the extent possible, when appointing new members to the Board, diversity in demographics including age, gender, geographical provenance and educational and professional background is also taken into consideration.

Relationship managers are appointed for all outsourcing contracts. All new service providers are approved by the Vendor Management Committee, with material contracts requiring joint approval by the Committee and Group Chief Executive Officer and reported to Colchester's Board. In line with relevant regulatory provisions, Colchester ensures the ongoing monitoring of the relationship with and the activities of, the material outsourced provider and the assessment of any relevant changes which may have occurred within the outsourced provider's operational structure, as well as undertaking a periodic performance review. As a firm we are strongly opposed to modern slavery and do not engage in, or knowingly conduct business with any organisation involved in, such activities. Our policy is outlined in our [Modern Slavery and Human Trafficking Statements](#), available on our website. Our internal and external monitoring ensures ongoing assessment of supervision, performance, contractual and regulatory obligations.



Oskar Potyka, Head of Distribution Austria, Germany & Eastern Europe and Cian O'Brien, Head of Investment Management Europe and Americas at the Citywire Vienna Event



I joined the Performance and Reporting team in Summer 2024, and it has been a privilege to learn from such knowledgeable and experienced colleagues. Working at Colchester has allowed me to apply formal statistical theory to utilise the power of data as an illustrative tool with coding being invaluable for innovation.

Holly Stevenson, Junior Performance and Reporting Analyst, London

Operational Resilience & Sustainability

Colchester has significantly enhanced its operational resilience and sustainability in recent years, primarily through migrating its IT infrastructure to the Microsoft Azure Cloud. This transition has allowed for improved resource scalability and reduced downtime while promoting environmental sustainability by removing the need for physical server maintenance and replacement every 3-5 years.

- **Cloud Infrastructure Benefits:** Colchester uses replication, geographic diversity, regular testing and robust security measures to provide resilience in its use of the cloud.
- **Azure virtual desktop and Remote Desktop Services benefits:** The use of Azure Virtual Desktops (AVDs) and Remote Desktop Services (RDS) allows employees to work securely from any location, ensuring uninterrupted access to computing resources even if one service faces issues. This cloud-based approach also means that office PCs can be replaced only when necessary, contributing to sustainability efforts.
Colchester continues to develop its comprehensive Cyber Security Framework that addresses the heightened cyber threat landscape.
- **Robust Cyber Security Framework:** This includes a security incident event management platform (SIEM), an endpoint detection and response platform (EDR), a 24/7 security operations centre (SOC) that monitors the SIEM and the EDR, email and web filtering, darkweb monitoring, and regular phishing training and testing of staff. This proactive approach aims to mitigate cyber risks which remain a significant concern for all firms.
- **Focus on SIEM:** The SIEM is a new addition to Colchester's cyber security framework. A SIEM is a tool that ingests and analyses around 600 million of Colchester's logs every month. Logs are IT records of events, processes or user activities within a system. These logs are generated by Colchester's virtual and physical hardware (including firewalls for example), Microsoft, cyber security software and other software every month. The SIEM is crucial for two reasons. Firstly, because the 24/7 analysis of these logs could lead to a cyber attack being spotted before it has caused any damage. Secondly, it means that in the event Colchester does suffer a cyber attack, it should be possible to work out what has happened, enabling the Firm to recover from an incident and minimise downtime.



Claudia Gollmeier at Fondskongress in Mannheim

Colchester's Business Continuity and Disaster Recovery ("BCDR") Plan, Information and Cyber Security Policies and practices are robust, living documents. The firm tests its BCDR Plan regularly and the Chief Executive Officer (London) reports on matters relating to BCDR to the BCDR Committee and matters relating to cyber security to the Board. Any deficiencies identified are systematically remedied with appropriate levels of control, training and changes to procedures.

Colchester endeavours to manage the business with the minimum wastage of resources. Colchester monitors its global operational sustainability and has introduced initiatives and taken measures across its offices to do what it can to protect the environment and improve sustainability. These are outlined in our [Environmental and Sustainability Policy](#).

In April 2025, employees from the London office once again volunteered at different depots of the Felix Project, a London based charity which is committed to rescuing surplus food from the food industry that cannot be sold and would otherwise go to waste. This food is then redistributed to front-line charities and primary schools in London, helping reduce greenhouse gas emissions².

Colchester continues to reduce the environmental impact of travel and actively promotes the use of video conferencing where appropriate. Business miles flown have reduced by 32% since December 2023. Staff are encouraged to fly Economy and use public transport where possible. Carbon emissions were 118 tonnes lower than the previous year (a 30% reduction). Colchester continues to promote the use of sustainable hotels where available when travelling. Overall average CO₂ emissions per trip are 20% lower than the previous 12 months.



Money Management Global Fixed Income Fund of the Year Award for Colchester's Emerging Markets Bond Fund



London employees volunteering at the Felix project



I've been with Colchester exactly 1 year today, the time has absolutely flown! I was greeted this morning with a "thank you for your hard work, contributions and commitment" message from management which was well received. In my time here I have already learnt so much on specialist products. My career continues to grow as has my personal development. Every department is willing to go the extra mile with any questions I've had including providing regular training sessions on different products. Thank you, Colchester.

Michelle Richer, Operations Analyst, London

² 8-10% of the world's greenhouse gas emissions relate to food waste (Source – Energysavingtrust.org.uk)

Risk Disclosures

- Colchester Global Investors ("Colchester") does not deem this document to be a marketing communication. No part of this document may be reproduced or published in any form or by any means without Colchester's prior written permission.
- Unless otherwise stated, this document reflects Colchester's views, opinions and holdings as of 30 April 2025. Opinions expressed in this document may be changed without notice at any time after publication. Notwithstanding our fiduciary duties to existing clients, Colchester makes no representation or warranty as to the accuracy or completeness of the information in this document and disclaims all liability for any direct, indirect, consequential or other losses or damages including loss of profits incurred by you or any third party that may arise from reliance on this document.
- Nothing in this document should be construed as providing any type of investment, tax or other advice, or be considered a solicitation, recommendation, endorsement or offer to purchase or sell any financial instrument.
- This is not a research report and is not intended as such. Certain information in this document may constitute forward-looking statements. Due to the various uncertainties and actual events, the actual performance of the markets may differ materially from those reflected or contemplated in such forward-looking statements. As a result, clients/investors should not rely on such forward-looking statements in making any investment decisions.
- This document may contain information obtained from third parties, including ratings from credit ratings agencies. Reproduction and distribution of third party content in any form is prohibited, except with the prior written permission of the related third party. Third party content providers do not endorse or recommend the securities or products discussed herein, nor do they guarantee the accuracy, completeness, timeliness or availability of any information, including ratings (negligent or otherwise), regardless of the cause, or for the results obtained from the use of such content. Third party content providers give no express or implied warranties, including, but not limited to, any warranties of merchantability or fitness for a particular purpose or use. Third party content providers shall not be liable for any direct, indirect, incidental, exemplary, compensatory, punitive, special or consequential damages, costs, expenses, legal fees, or losses (including lost income or profits and opportunity costs or losses caused by negligence) in connection with any use of their content, including ratings. Credit ratings are statements of opinions and are not statements of fact or recommendations to purchase, hold or sell securities. They do not address the suitability of securities for investment purposes and should not be relied on as investment advice.
- The World Risk Index is the product of a close cooperation between scientists and practitioners, it was developed by Birkmann and Welle for the Bündnis Entwicklung Hilft (The Alliance Development Works). For further information, please see <https://www.ireus.uni-stuttgart.de/en/International/WorldRiskIndex/>
- The YALE Environmental Performance Index (EPI) is constructed through the calculation and aggregation of 40 indicators reflecting national-level environmental data. For further information, please see <https://epi.envirocenter.yale.edu/>
- © 2025 FE Money Management. all rights reserved. the information, data, analyses, and opinions contained herein (1) include the proprietary information of FE Money Management (2) may not be copied or redistributed (3) do not constitute investment advice offered by FE Money Management (4) are provided solely for informational purposes and therefore are not an offer to buy or sell a security (5) are not warranted to be correct, complete, or accurate. FE Money Management shall not be responsible for any trading decisions, damages, or other losses resulting from, or related to, this information, data, analyses, or opinions or their use. FE Money Management does not guarantee that a fund will perform in line with its Fund Manager of the Year award as it reflects past performance only. Likewise, the Fund Manager of the Year award should not be any sort of guarantee or assessment of the creditworthiness of a fund or of its underlying securities and should not be used as the sole basis for making any investment decision.
- There can be no assurance that professionals currently employed by Colchester will continue to be employed by the firm or that a level of experience or past performance is indicative of future performance or success.
- Information about how to make a complaint, any right to compensation and any cancellation rights will be provided to you upon request.

Regulatory Information

- Colchester is an employee-owned firm headquartered in London and has regional offices in New York, Singapore, Dublin, Madrid, Munich, and Dubai with a representative office in Sydney, Australia.
- Colchester Global Investors Limited is authorised and regulated by the Financial Conduct Authority in the United Kingdom. Colchester is also registered with the Securities and Exchange Commission in the USA.
- Colchester Global Investors Limited is registered with the Securities Commission of The Bahamas, as the investment manager for an investment fund licensed as a Smart Fund model 003, in accordance with the provisions of the Investment Funds Act, 2019.
- Colchester Global Investors (Singapore) Pte. Ltd holds a capital markets services licence in fund management issued by the Monetary Authority of Singapore. Colchester Global Investors (Singapore) Pte. Ltd also holds an offshore discretionary investment management services licence issued by the Financial Services Commission of Korea.
- Please note the following in respect of Colchester's regulatory status in Australia: (i) neither Colchester Global Investors Limited nor Colchester Global Investors (Singapore) Pte. Ltd. holds an Australian financial services licence for the provision of certain financial services, and both entities are exempt from the requirement to hold an Australian financial services licence under the Corporations Act 2001 (Cwlth) in respect of the financial services Colchester provides; (ii) Colchester Global Investors Limited is authorised and regulated by the Financial Conduct Authority of the United Kingdom under UK laws, which differ from Australian laws; (iii) Colchester Global Investors (Singapore) Pte. Ltd. is regulated by the Monetary Authority of Singapore under Singapore laws, which differ from Australian laws. Therefore, Australian wholesale clients are not necessarily subject to the same types of legal protections or remedies that they would enjoy if Colchester was directly subject to the Corporations Act. Colchester is entitled to offer its financial services in Australia pursuant to an exemption from the requirement to hold an Australian Financial Services Licence under the Corporations Act, on the basis, among other things, that the clients are "wholesale clients" within the meaning of the Corporations Act.
- Colchester Global Investors (Singapore) Pte. Ltd is licensed as a financial services provider by the Financial Sector Conduct Authority (licence number 53343) in South Africa.
- Colchester Global Investors Middle East Limited is regulated by the Dubai Financial Services Authority for the provision of Managing Assets, Advising on Financial Products and Arranging Deals in Investments. All communications and services are directed at Professional Clients only. Persons other than Professional Clients, such as Retail Clients, are not the intended recipients of Colchester Global Investors Middle East Limited's communications or services. Colchester Global Investors Middle East Limited is a company established in the Dubai International Financial Centre (DIFC) pursuant to the DIFC Companies Law with registration number CL 3239.
- Colchester Global Investors Inc. is a wholly owned subsidiary of Colchester Global Investors Limited. It is not permitted to provide investment advice or otherwise engage in a regulated activity.
- Colchester Global Investors (Dublin) Management Limited is authorised and regulated by the Central Bank of Ireland in Ireland. Colchester Global Investors (Dublin) Management Limited, Sucursal en España is a branch of Colchester Global Investors (Dublin) Management Limited established in Spain and supervised by the CNMV. Colchester Global Investors (Dublin) Management Limited, German Branch is a branch of CGIE established in Germany and supervised by the Federal Financial Supervisory Authority (BaFin).

THIS DOCUMENT IS INTENDED FOR PROFESSIONAL USE ONLY AND IS NOT FOR PUBLIC DISTRIBUTION. IT MAY CONTAIN INFORMATION THAT IS PRIVILEGED, CONFIDENTIAL OR EXEMPT FROM DISCLOSURE UNDER APPLICABLE LAW. IF YOU HAVE RECEIVED THIS COMMUNICATION IN ERROR, PLEASE DISREGARD AND DELETE IT AND DO NOT DISSEMINATE THE CONTENTS TO ANY OTHER PERSON.

THIS DOCUMENT DOES NOT CONSTITUTE A PROSPECTUS OR OFFERING CIRCULAR TO SUBSCRIBE FOR ANY SECURITIES. POTENTIAL INVESTORS MUST REVIEW THE RELEVANT PRODUCT OFFERING DOCUMENTS OR INVESTMENT MANAGEMENT AGREEMENT, AND IN PARTICULAR, THE RISK DISCLOSURES SET OUT THEREIN.